



It is important to remember that your logo/mark will be on a piece of jewelry that is smaller than one square inch (at least ten times smaller than this artistic rendering) and cast in metal. We preserve the integrity of your logo/mark by ensuring that elements large enough to be seen by the consumer are consistent with your brand. Jostens' proprietary artwork. No right is granted herein to use, copy or reproduce this artwork or distribute this artwork with any third party without the prior written permission of Jostens. Contact legal@jostens.com with questions.

Tool #:

Catalog #:

Stone Size/Shape: 17x15 Barrel

SHEER ICE (DOMED)

GOLDSTONE

Reference #: 387510

Art ID #:

Tool Type:

X Finger:

Based on:

School/Account: Millard High School

City: Omaha

State/Country: NE

Salesperson: School Traditions

Jewelry CSR: HANSON

Artist: KOBBERMANN

Approval Date: 03-07-16

Revision Date:

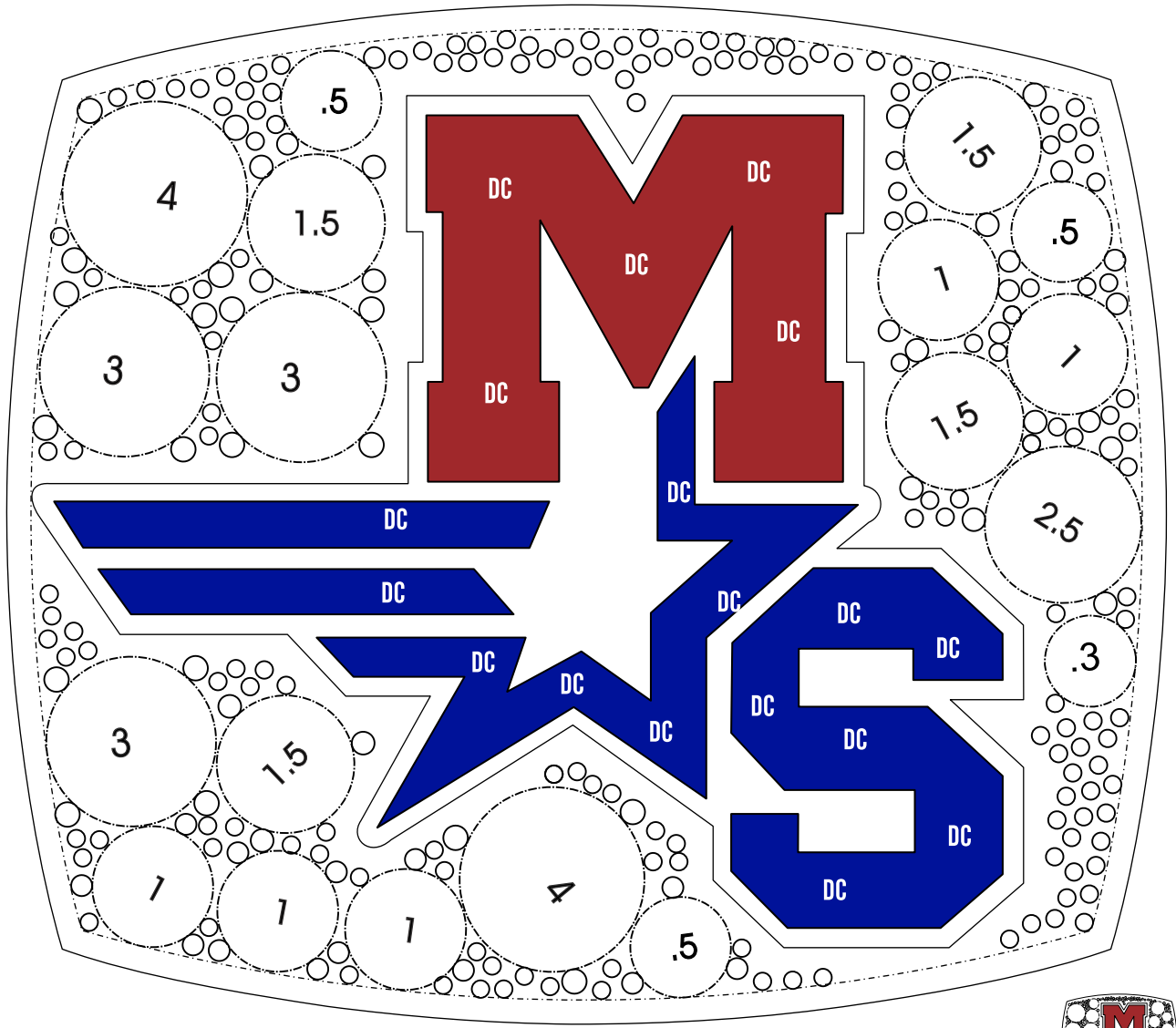
Inload Date:

REFERENCE ART

X97743

DESCRIPTION
RAISE AND MODEL
RAISE AND POLISH

Small Stone Set
COUNT/SIZES



Electronic Artwork at 10 to 1 Ratio
Printed Artwork at 10 to 1 Ratio



Actual Size

IMPORTANT: SALES REP:
 Please review this design with your customer to ensure that all information and details are correct. Notify your customer service representative immediately with any changes that need to be made. Sign above and return to your CSR within two weeks. Failure to respond within two weeks constitutes acceptance.

It is important to remember that your logo/mark will be on a piece of jewelry that is smaller than one square inch (at least ten times smaller than this artistic rendering) and cast in metal. We preserve the integrity of your logo/mark by ensuring that elements large enough to be seen by the consumer are consistent with your brand. Jostens' proprietary artwork. No right is granted herein to use, copy or reproduce this artwork or distribute this artwork with any third party without the prior written permission of Jostens. Contact legal@jostens.com with questions.

Design Dash: XLF1LMK

Design Variation: LPK1ABAG

Style: B

Tool(s):

Reference #: 387510

Art ID #:

Based On #: XXA2ABA

Tool Type: AM

Font:

Customer: Millard HS South

City: Omaha

State/Country: NE

Salesperson: School Traditions LLC

Jewelry CSR: April Hanson

Artist: RL

Approval Date: 3/6/16

Revision Date:

Inload Date:

Week/Year:

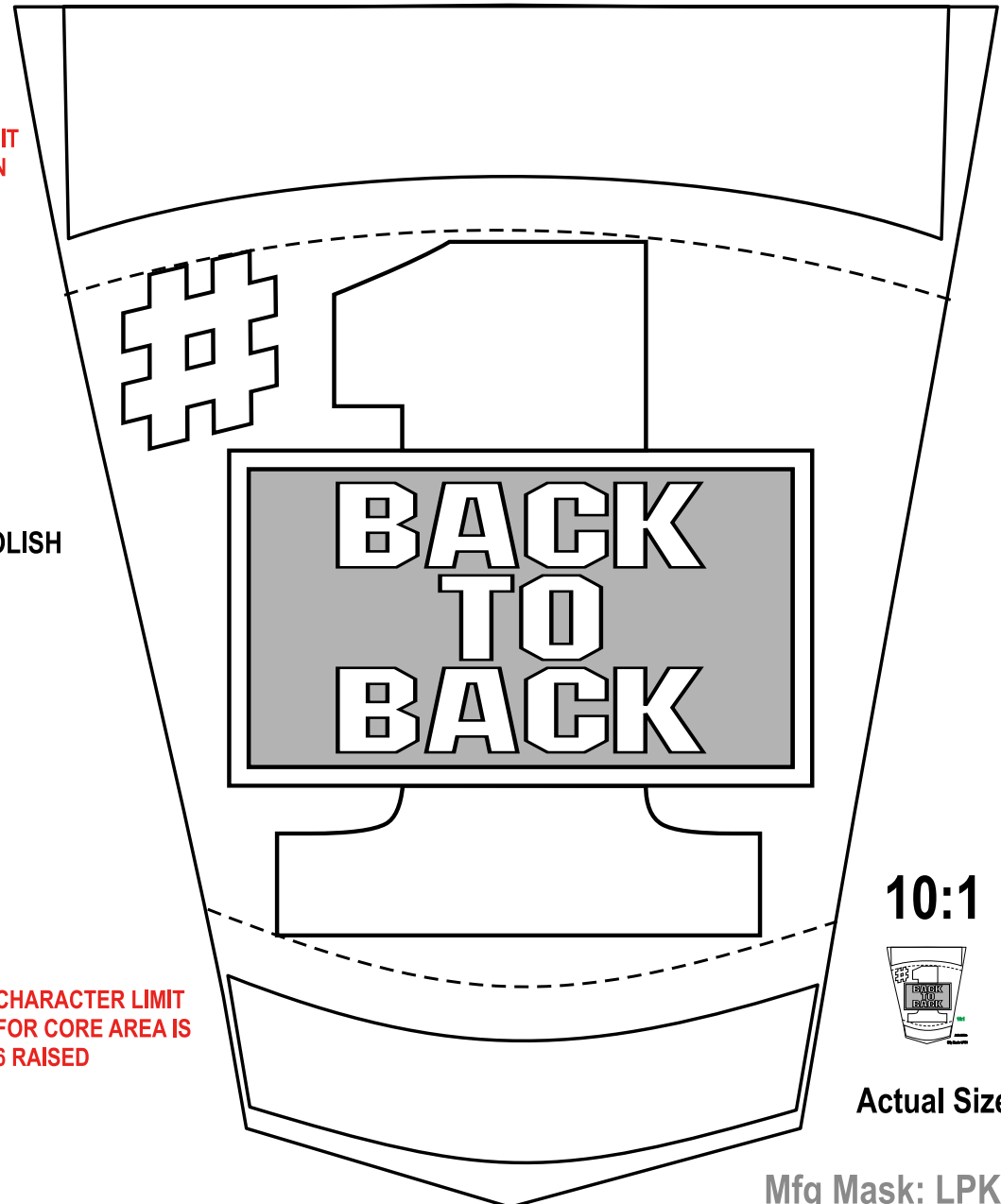
XLF1/LPK1

Custom Champ

R

**CHARACTER LIMIT
FOR TOP RIBBON
12 RAISED**

**RAISE AND POLISH
DETAIL**

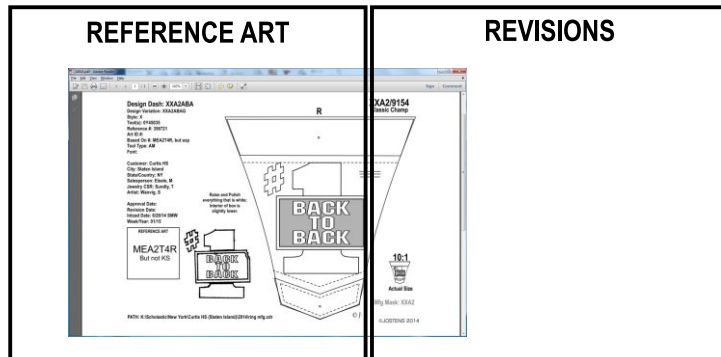


**CHARACTER LIMIT
FOR CORE AREA IS
6 RAISED**

10:1



Actual Size



IMPORTANT: A NOTE TO THE SALES REPRESENTATIVE:
 Please review this design with your customer to ensure that all information and details are correct. Notify your CSR immediately with any changes that need to be made. Sign below and return to your CSR within two weeks. Failure to respond within two weeks constitutes acceptance.

Your Signature: _____

PATH: K:\Scholastic\Nebraska\Millard HS South (Omaha)\2016\ring mfg.cdr

Mfg Mask: LPK1

© JOSTENS, INC. 2016

It is important to remember that your logo/mark will be on a piece of jewelry that is smaller than one square inch (at least ten times smaller than this artistic rendering) and cast in metal. We preserve the integrity of your logo/mark by ensuring that elements large enough to be seen by the consumer are consistent with your brand. Jostens' proprietary artwork. No right is granted herein to use, copy or reproduce this artwork or distribute this artwork with any third party without the prior written permission of Jostens. Contact logos@jostens.com with questions.